

20 | 30

APARTMENT A12

20|30 Apartment A12

Location: Block A - 12th Floor

Area: 600 m²

Includes:

- › 200 m² Open Reception Area
- › 4 Master Bedrooms
- › High-End Kitchen + Appliances
- › 1 Family Room
- › 1 Guest Bathroom
- › 2 Service Rooms + Bathroom
- › 4 Parking Spots
- › 1 Storage
- › 1 Driver Room
- › 1 Refrigerated Wine Locker

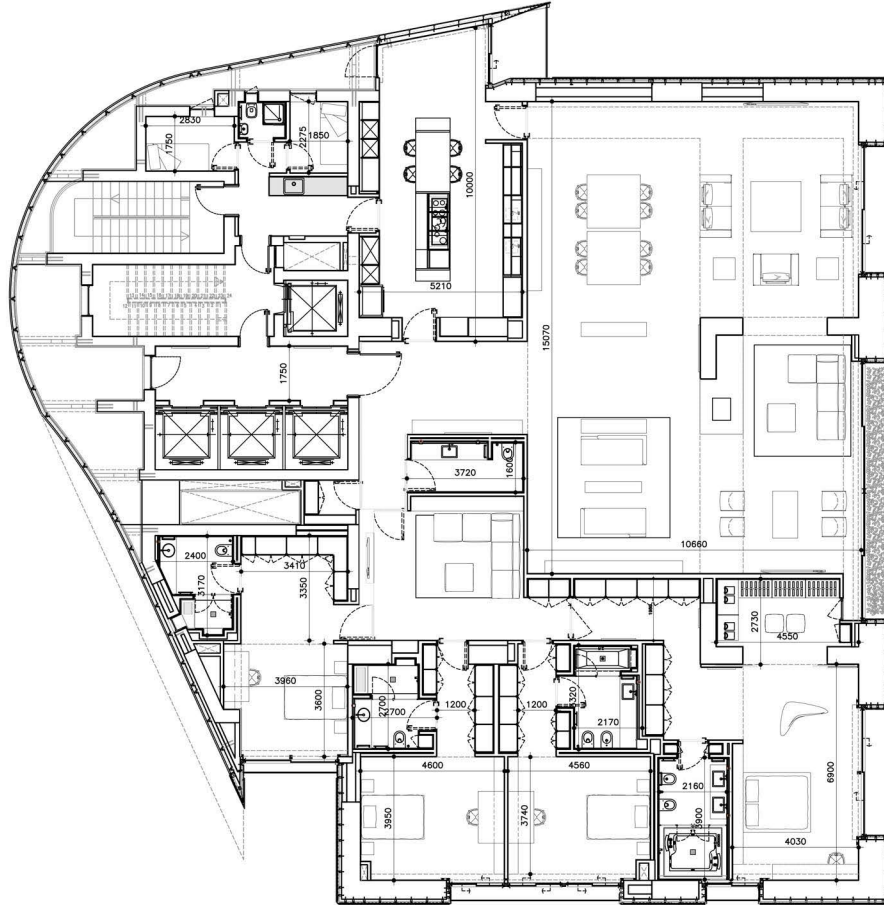


Specifications:

- ✓ VRV Air Conditioning
- ✓ Floor Heating
- ✓ Low-E Double Glazing - Vitrocsa
- ✓ Home Automation
- ✓ Italian Sanitary Fixtures (Boffi/Neve)
- ✓ VIKING Kitchen Appliances
- ✓ Marble Tiling in Reception Area
- ✓ Wood Flooring in Bedrooms Area

GENERAL NOTES:

1. THIS DRAWING IS THE COPYRIGHT OF JAMIL SAAB & PARTNERS AND MUST NOT BE RETAINED, COPIED OR USED WITHOUT THE ABOVE DEVELOPER'S AUTHORITY.
2. DO NOT SCALE FROM THE DRAWINGS.
3. ALL DIMENSIONS ARE IN MILLIMETERS AND LEVELS IN METERS UNLESS NOTED OTHERWISE. ALL DIMENSIONS TO BE VERIFIED ON SITE & APPROVED BY THE ENGINEER.



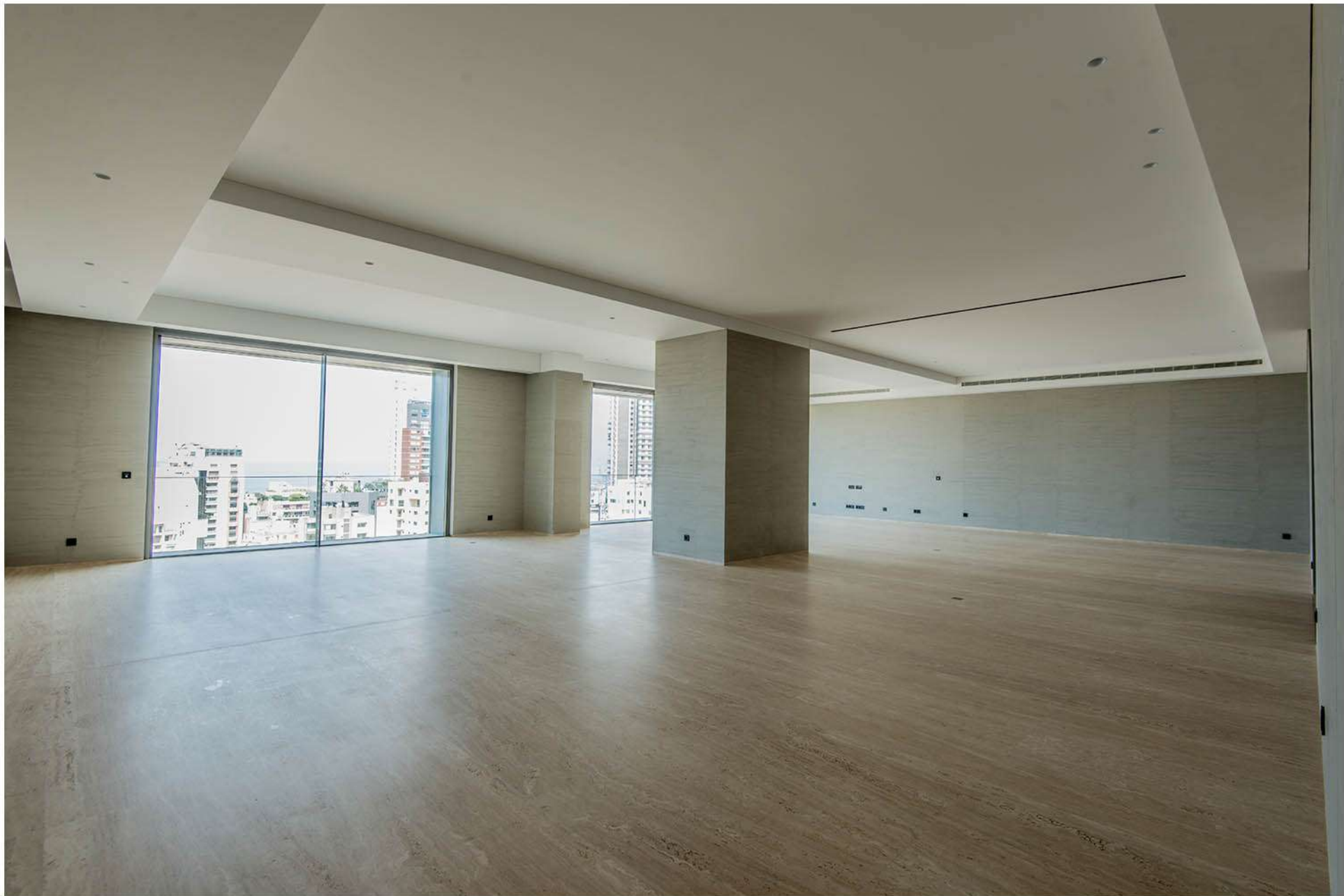
PROJECT:



DRAWING TITLE:

A12
FLOOR LAYOUT



















20|30 FACILITIES

2500 m² of Gardens

Gated Community

24/7 Maintenance Service Crew

50 Visitor Parking Spots

Private Health Club

Outdoor Pool

Indoor Pool / Jacuzzi

Secluded Driver Quarters

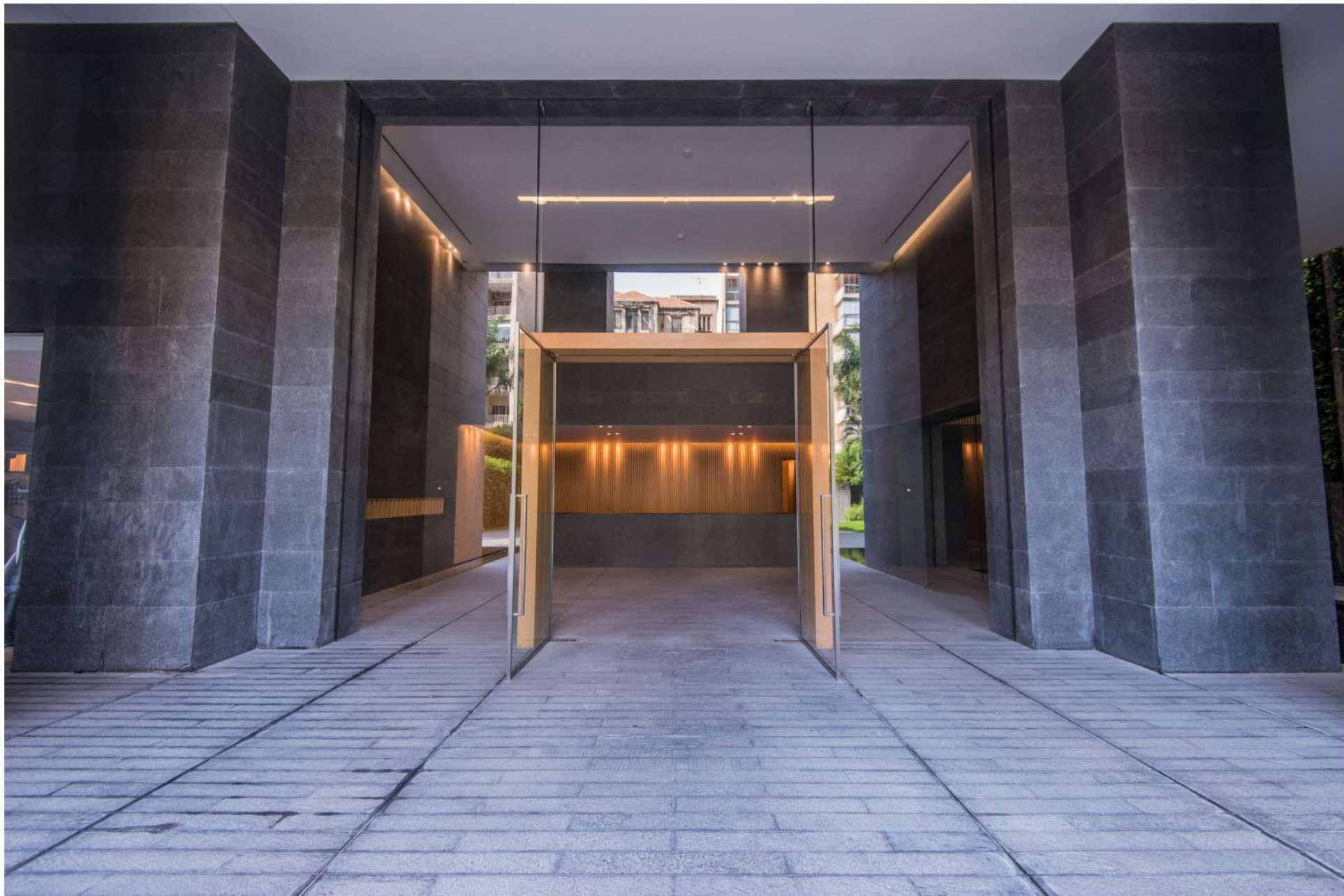
Secluded Driver Lounge

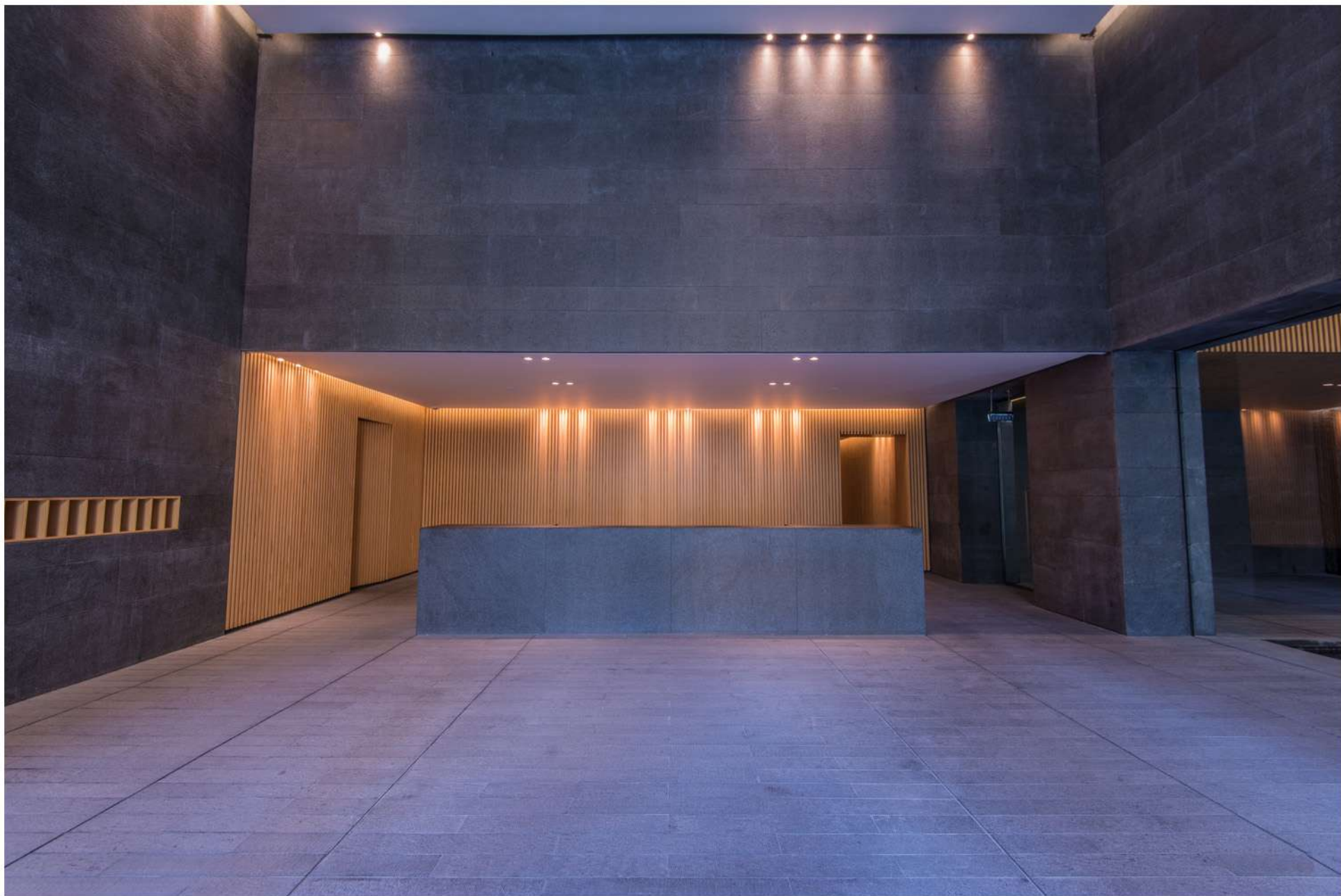
Multipurpose Lounge

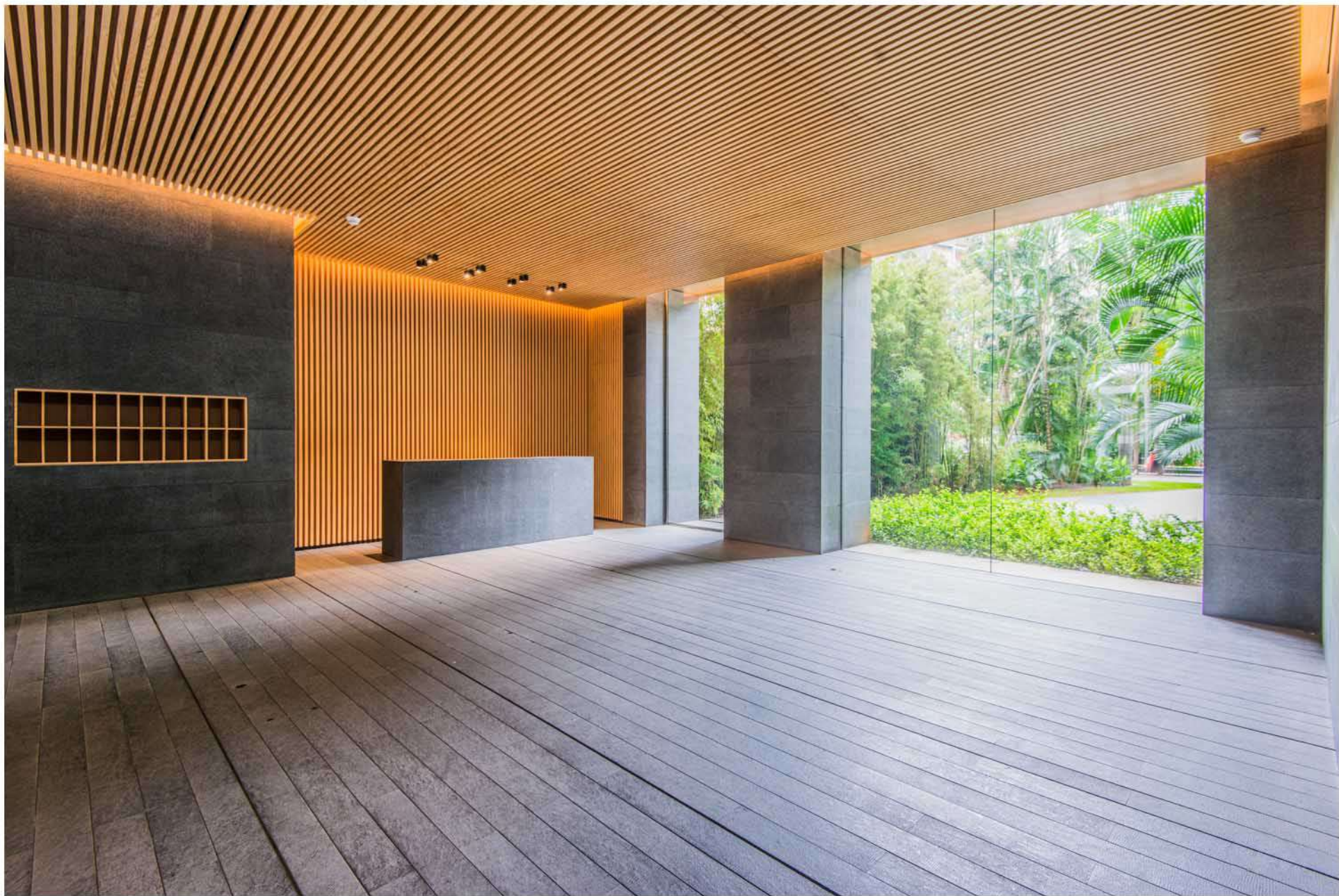
Wine Cellar

With 1800 m² of Photovoltaic panels generating electricity to supply all common areas and Zinc cladding providing proper thermal and acoustic insulation, 2030 blends luxury with unprecedented Eco-friendliness.

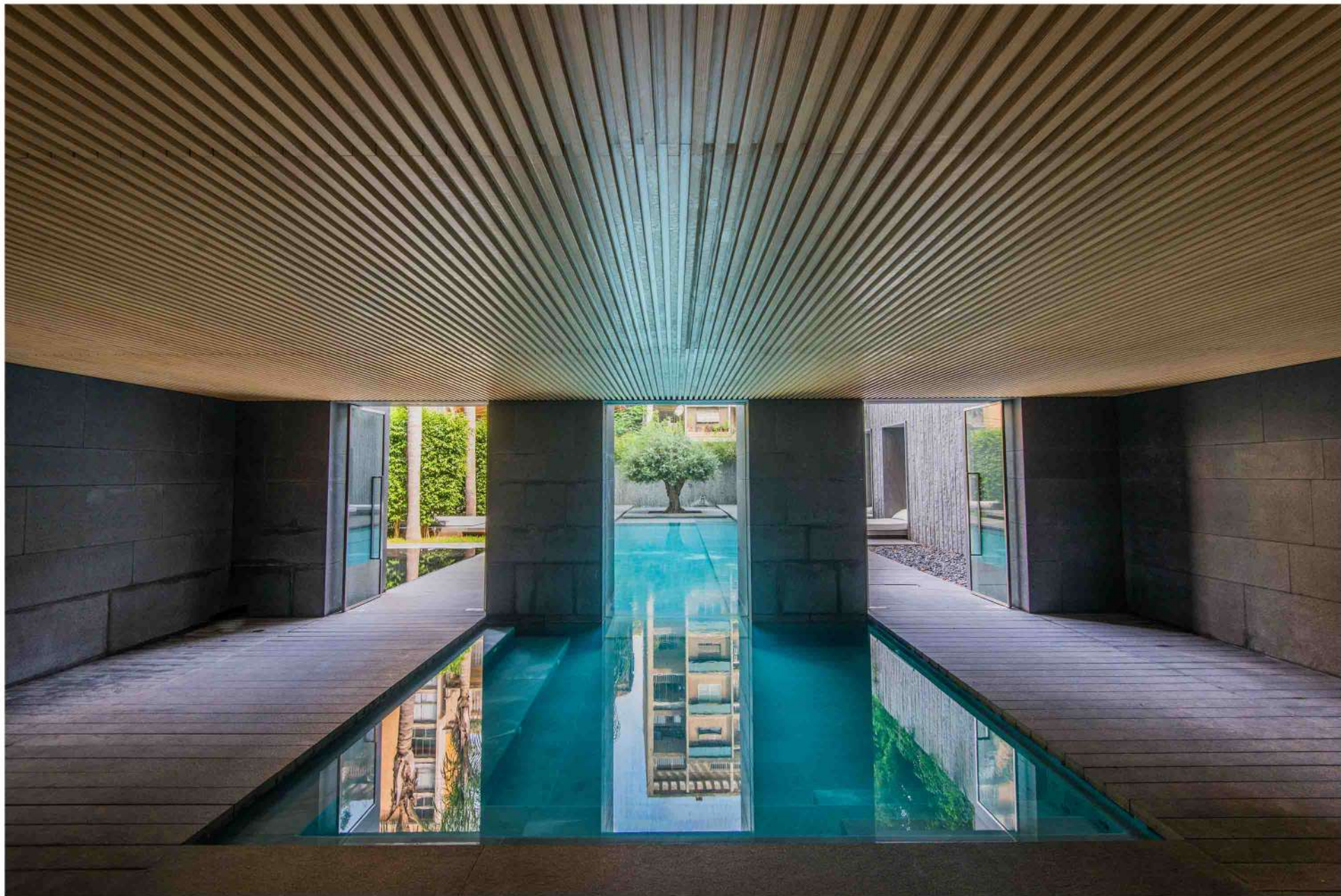


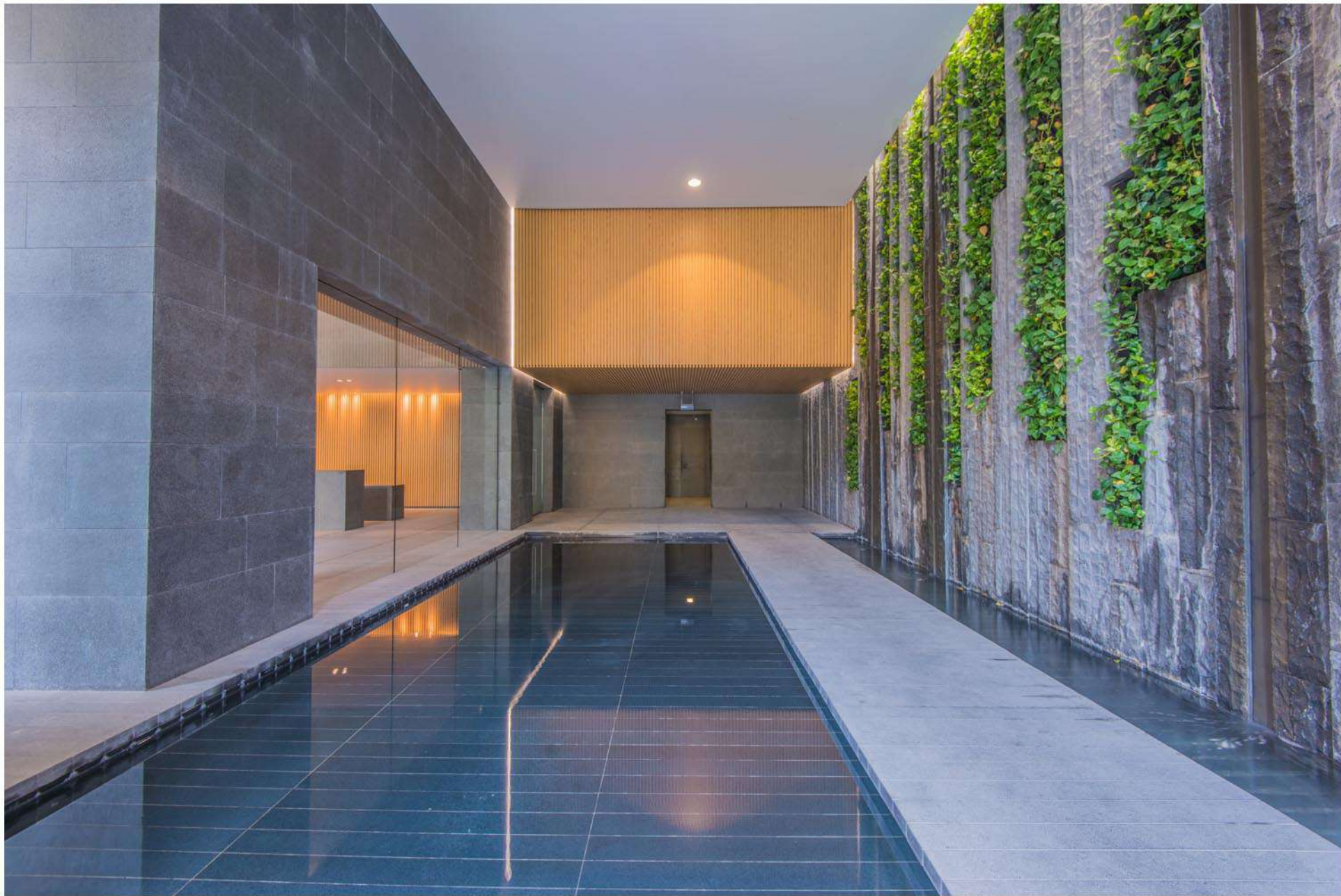




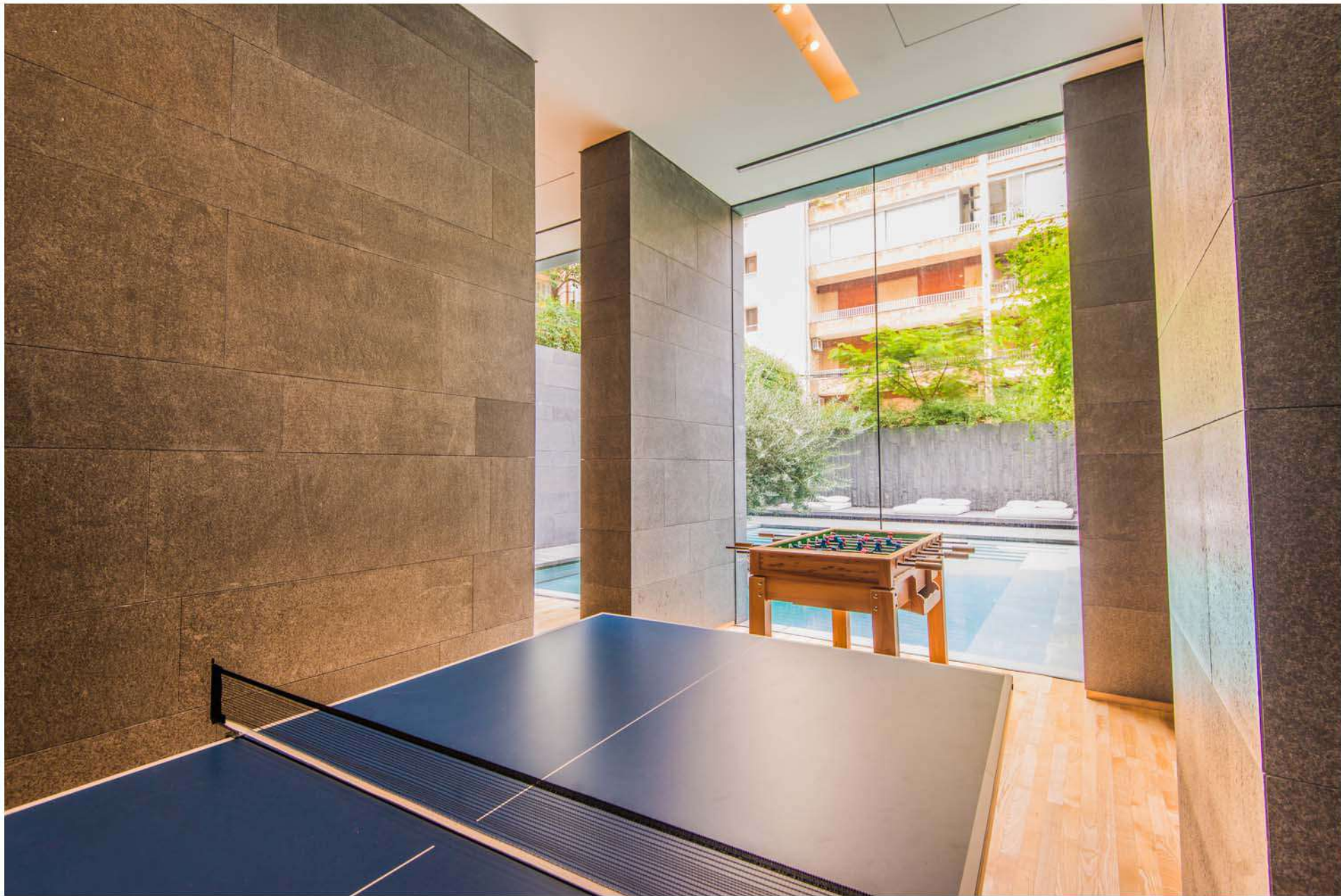














JAMIL SAAB & CO
REAL ESTATE DEVELOPER

SURSOCK TOWER - TABARIS ASHRAFIEH
tel/fax +961 1 333 544
info@jamilsaab.com
www.jamilsaab.com